



MMP PS320W-24VDC
 AC → DC Power Supply
 88-264 VAC in → 24 VDC, 12.5 Amps Out

The MMP-PS series of cased switching power supplies offers designers compact size, lightweight, low cost, and high reliability.

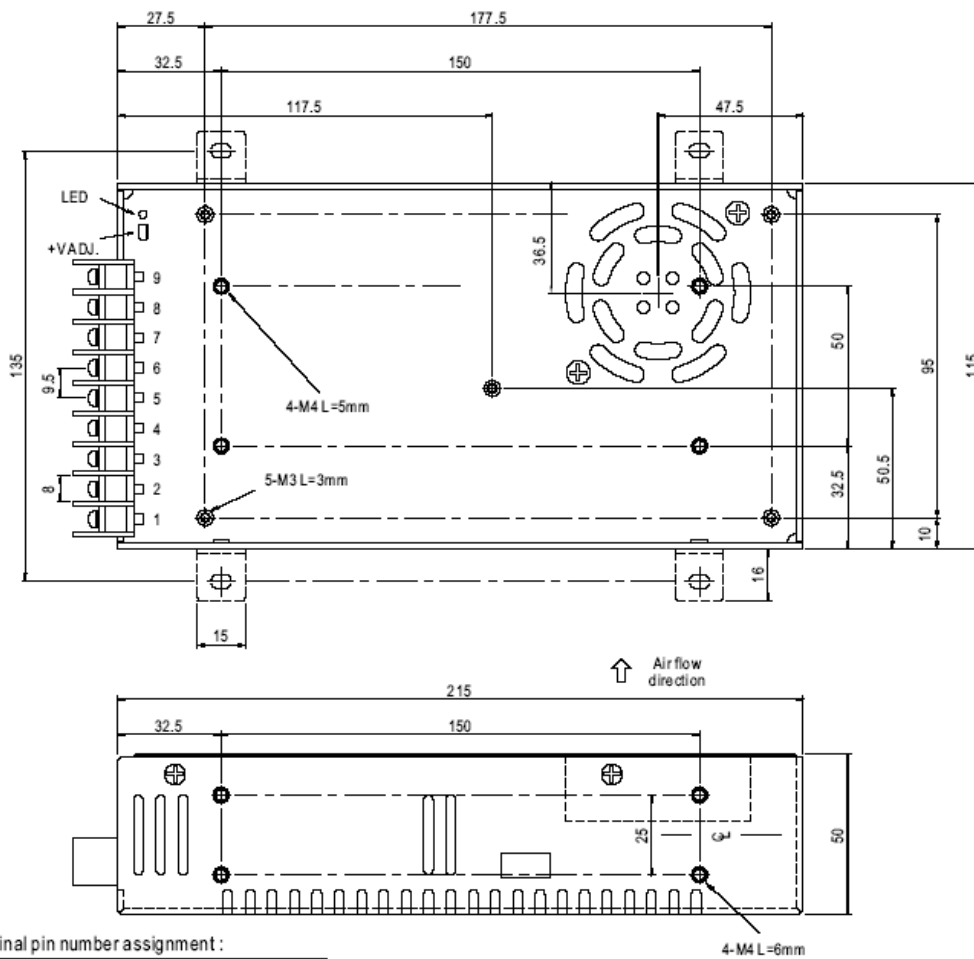
SPECIFICATION	VALUE
INPUT	
Input Voltage Range	88-264 VAC Universal Input
Input Filter	N/A
Remote ON/OFF	N/A
OUTPUT	
Output Current	12.5 Amps DC
Voltage Accuracy	24V = ±1%
Output Adjustability	18 ~ 27 VDC
Line Regulation (HL-LL)	±0.5%
Load Regulation (20-100% load)	12-48V ±0.5%
Short Circuit Protection	Hiccup mode, auto recovery
Ripple/Noise (20MHz BW)	5-24V 150mV p-p
Step-up, Rise, Hold time.	2000ms, 20ms, 20ms @ full load
GENERAL	
Efficiency	82 %
Isolation Voltage (input to output)	3KV(input to output 1min) 0.5-1.5KV(to ground)
Isolation Resistance (input to output)	I/P-O/P, I/P-FG, O/P-FG: 100M Phms/500VDC
Frequency Range	47 ~ 63Hz
ENVIRONMENTAL	
Ambient Operating Temp.	-10 deg c to +50 deg c 100% power, 60 deg c 60% power
Storage Temperature	-20°C to +85°C
Humidity (non-condensing)	10% to 95% RH
Cooling	Forced air fan built in
PHYSICAL	
Weight	2 lbs



NOTES

- 1) All parameters are specified at 230VAC input, rated load and 25°C ambient.
- 2) Tolerance: Include set up tolerance, line regulation and load regulation.
- 3) Ripple & noise measured at 20MHz using 12" twisted pair terminated with a 0.1uf & 48uf capacitor.
- 4) Case and pin-to-case measurements are for reference only unless noted otherwise.

Dimensional Drawing:



Terminal pin number assignment :

Pin No.	Assignment	Pin No.	Assignment
1	AC/L	4~6	DC OUTPUT -V
2	AC/N	7~9	DC OUTPUT +V
3	FG \perp		

MIDWEST MOTION PRODUCTS

DESIGN, MANUFACTURING & DISTRIBUTION - MOTION CONTROL EQUIPMENT

www.midwestmotion.com email: sales@midwestmotion.com