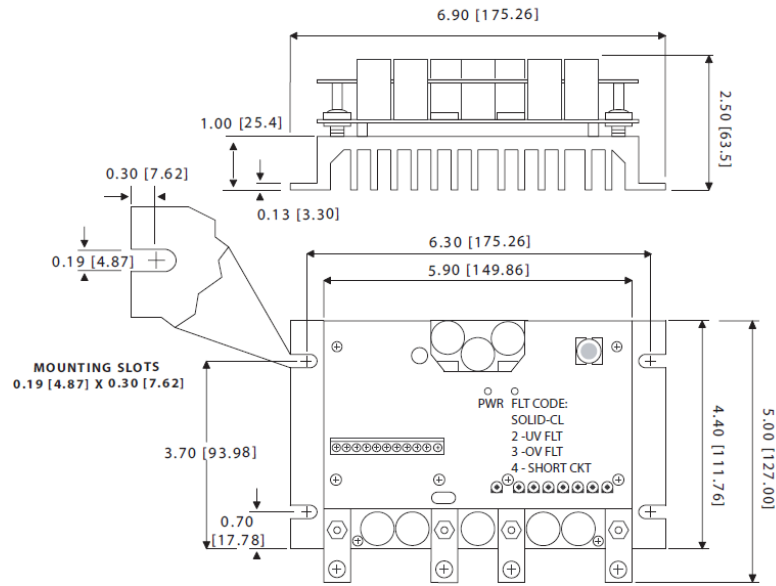


D I M E N S I O N S



ALL DIMENSIONS IN INCHES [MILLIMETERS]

S P E C I F I C A T I O N S

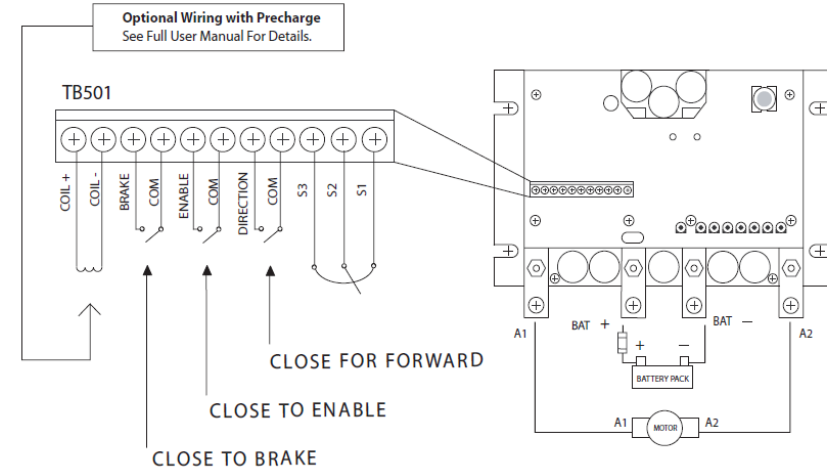
DC Input Voltage [V]	10 - 32
DC Output Voltage [V]	0 - 100% of Input
Continuous Current [A]	120*
1 Minute Peak Current [A]	250
Speed Range	80:1
Speed Regulation	1%
Ambient Temperature [°C]	0 - 40

* Derate by 15% when mounted horizontally.

** Derate by 20% when mounted horizontally.

Q U I C K S T A R T G U I D E

C O N N E C T I O N S



STEP 1: Connect speed potentiometer along with optional Brake and Direction switches as shown in above diagram.

STEP 2: Connect motor armature across A1 and A2.

STEP 3: Connect battery to (BAT +) and (BAT -), taking note of the polarity. Midwest Motion Products recommends adding a fuse and master power switch external to the drive.

STEP 4: Connect Enable switch or jumper.

LED Codes

Power: The drive is receiving battery voltage.

Fault:

- Solid: The drive is in Current Limit.
- Two Blinks: The drive is in an Under Voltage Trip.
- Three Blinks: The drive is in an Over Voltage Trip.
- Four Blinks: The drive is in a Short Circuit Trip.
- Five Blinks: The drive is in an Overheat Trip.