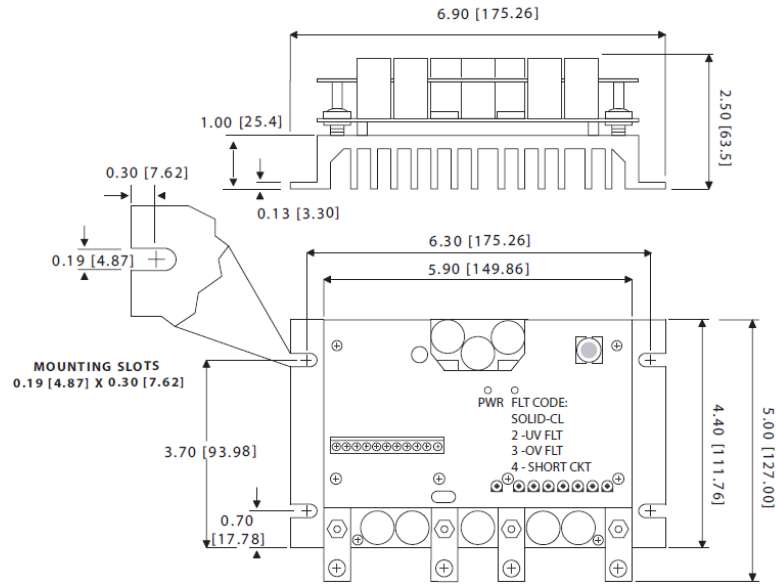


D I M E N S I O N S



ALL DIMENSIONS IN INCHES [MILLIMETERS]

S P E C I F I C A T I O N S

DC Input Voltage [V]	20 - 62
DC Output Voltage [V]	0 - 100% of Input
Continuous Current [A]	100**
1 Minute Peak Current [A]	240
Speed Range	80:1
Speed Regulation	1%
Ambient Temperature [°C]	0 - 40
Four Quadrant Drive	
•Analog Input (0v to 5v, ISOLATED)* (can be used in place of potentiometer)	
*signal common must be same as battery common	

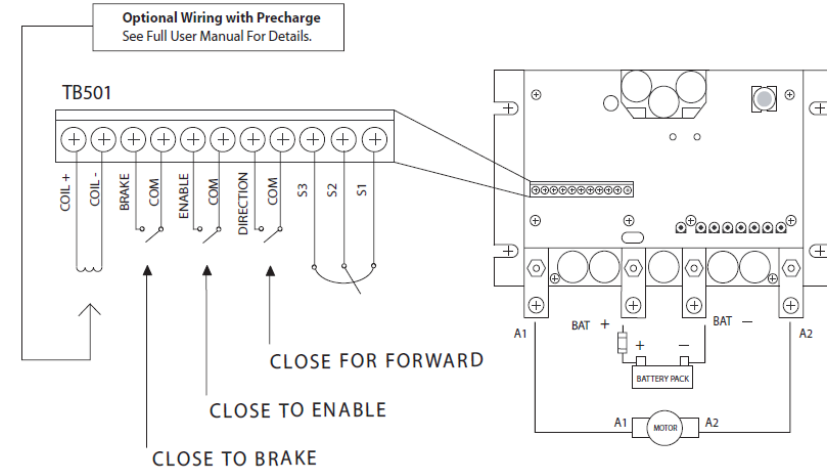
** Derate by 20% when mounted horizontally.



MMP 100A 20-62V

Q U I C K S T A R T G U I D E

C O N N E C T I O N S



STEP 1: Connect speed potentiometer along with optional Brake and Direction switches as shown in above diagram.

STEP 2: Connect motor armature across A1 and A2.

STEP 3: Connect battery to (BAT +) and (BAT -), taking note of the polarity. Midwest Motion Products recommends adding a fuse and master power switch external to the drive.

STEP 4: Connect Enable switch or jumper.

LED Codes

Power: The drive is receiving battery voltage.

Fault:

- Solid: The drive is in Current Limit.
- Two Blinks: The drive is in an Under Voltage Trip.
- Three Blinks: The drive is in an Over Voltage Trip.
- Four Blinks: The drive is in a Short Circuit Trip.
- Five Blinks: The drive is in an Overheat Trip.