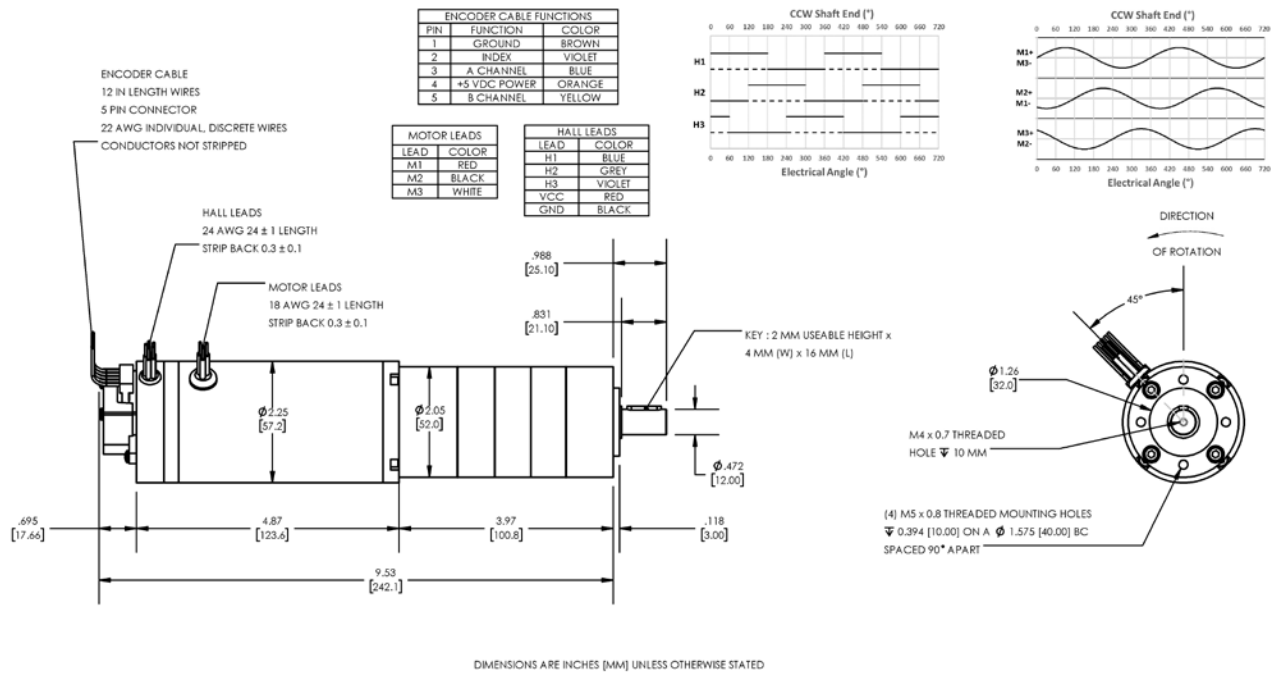


Model Number:

MMP BL58-487C-24V GP52-068 EU-1024



PLANETARY GEARMOTOR OUTPUT PARAMETERS:	VALUE	UNITS	TOLERANCE
Gearhead Ratio (exact)	68.06 : 1		
Gearhead Shaft Output Speed (at full-load)	54	RPM	MAX
Gearmotor Rated Continuous Torque	336	In-Lbs	MAX
Gearmotor Rated Peak Torque	443++	In-Lbs	-----
Gearhead Standard Backlash	48	Arc Minutes	MAX
Gearhead Efficiency	70%	-----	-----
Output Shaft Radial Load Capacity	102	Lbs	MAX
Output Shaft Axial Load Capacity	34	Lbs	MAX
Gearmotor Total Weight	4.85	Lbs	MAX

++ All Peak Torque values are dependent upon duty. Contact our sales office for details.

DC MOTOR PERFORMANCE PARAMETERS:	VALUE	UNITS	TOLERANCE
Rated DC Voltage	24	DC VOLTS	-----
Rated Continuous Current	17.5	AMPERES	-----
No-Load Speed	4748	RPM	+/- 15%
Rated Speed	3677	RPM	+/- 15%
Rated Continuous Power Out	307	WATTS	+/- 15%
Rated Continuous Torque	113	OZ-IN	-----
Peak Torque (motor only)	337	OZ-IN	-----
No-Load Current	0.81	AMPERES	10%
Back EMF Constant (Ke)	5.0	V/KRPM	+/- 10%
Torque Constant (Kt)	6.8	OZ-IN/AMP	+/- 10%
DC Armature Resistance	0.32	OHMS	+/- 15%
Armature Inductance	0.24	mH	+/- 15%
Armature temperature	155	DEG. C	MAX

NOTES:

- ENCODER & BRAKE OPTIONS AVAILABLE - [FOLLOW THIS LINK FOR DETAILS](#)
- NEMA MOUNTING FLANGE OPTION AVAILABLE - [FOLLOW THIS LINK FOR DETAILS](#)

MIDWEST MOTION PRODUCTS, INC

DESIGN, MANUFACTURING & DISTRIBUTION - MOTION CONTROL EQUIPMENT

www.midwestmotion.com

email: sales@midwestmotion.com